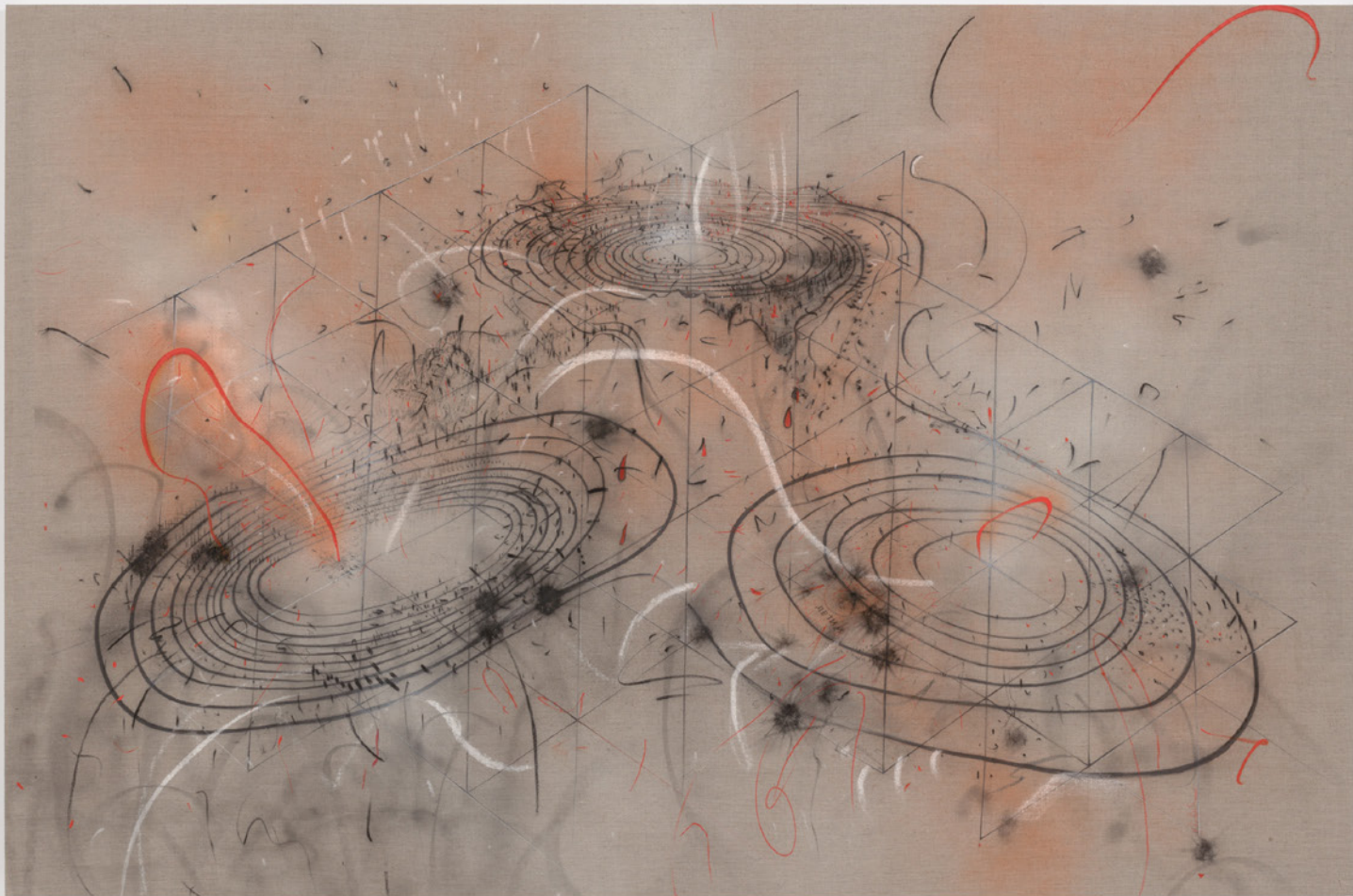


Yulia Pinkusevich



K E N T



Triple Isorithm: February 24, 2022, 2022

acrylic, spray paint, soot, and dry pigment on linen
61½ × 93 in. / 156.2 × 236.2 cm

Provenance:

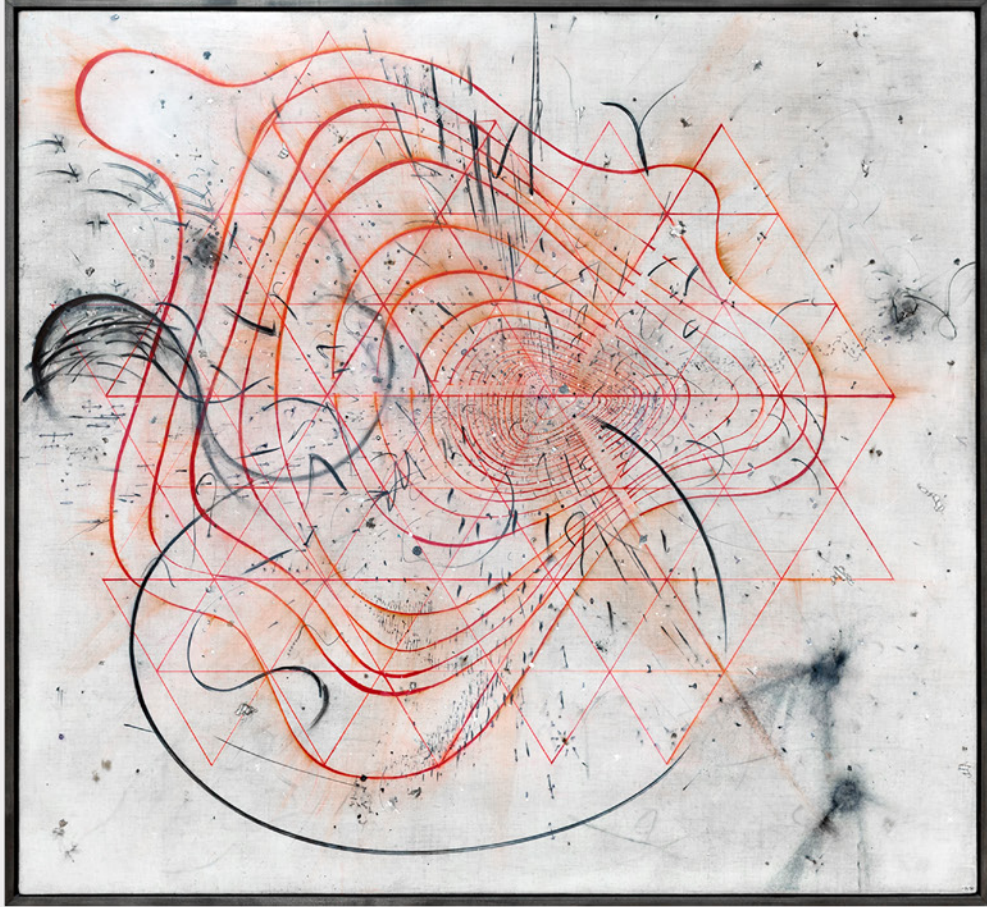
The Artist
Private Collection

Exhibited:

Schema: World as Diagram (2023). Marlborough Gallery, New York,
New York. 11 May – 15 August 2023. Reproduced in color, p. 109.

This piece diagrams the first day of the full scale Russian Invasion of Ukraine, 3 cities were simultaneously attacked by air bombing, Lugansk, Kiev and Bucha. This series uses Cold War Era military manuals for mapping the casualties of war. I co-opt this methodology to represent ongoing conflicts that Russia has inflicted on Ukraine and beyond.

–Yulia Pinkusevich

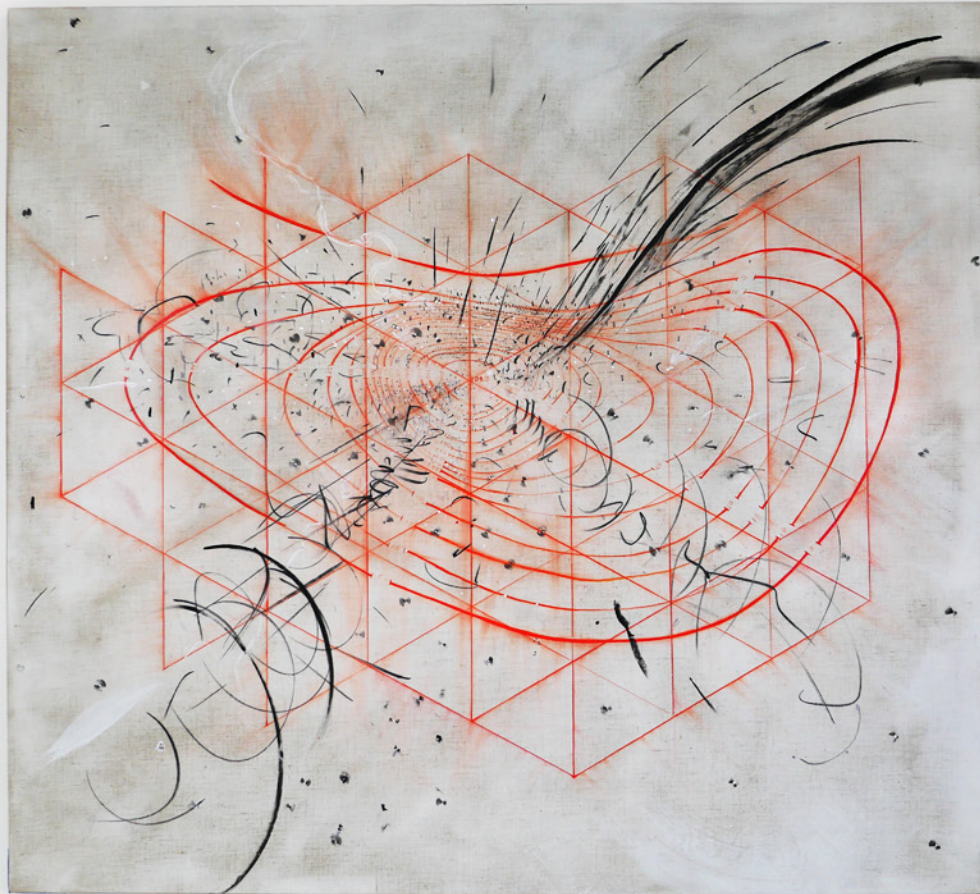


Isorithm 22-1, 2022

acrylic, ink, oil and dry pigment on canvas
48 × 52 in. / 121.9 × 132.1 cm

Provenance:

The Artist



Isorithm 22-3, 2022

ink, oil and dry pigment on canvas
48 × 52 in. / 121.9 × 132.1 cm

Provenance:

The Artist



Isorithm 22-4 (Kharkiv), 2022

acrylic, ink, oil and dry pigment on canvas
56 × 60 in. / 142.2 × 152.4 cm

Provenance:

The Artist

I was born in Kharkiv, Ukraine and lived there under Soviet occupation until my family was given a refugee visa and immigrated just a month prior to the fall of the Soviet Union. When we were en route to the airport in Moscow to fly abroad, I vividly recall seeing the military tank groves, deep carved repeating lines stamped into the asphalt of the main avenues and streets. What I saw were traces of the political upheaval that ultimately toppled the USSR. The patterns, groves and imprints of political unrest continue to fascinate and disrupt my sensibilities throughout my life.

–Yulia Pinkusevich



Isorithm 22-5 (Mariupol), 2022

acrylic, ink, oil and dry pigment on canvas
56 × 60 in. / 142.2 × 152.4 cm

Provenance:

The Artist

This piece diagrams the violence and resistance of Ukraine during the Russian Invasion in March 2022 around the city of Mariupol. The was badly bombed and many civilians including children were killed. The city is still under Russian occupation to this day.

–Yulia Pinkusevich

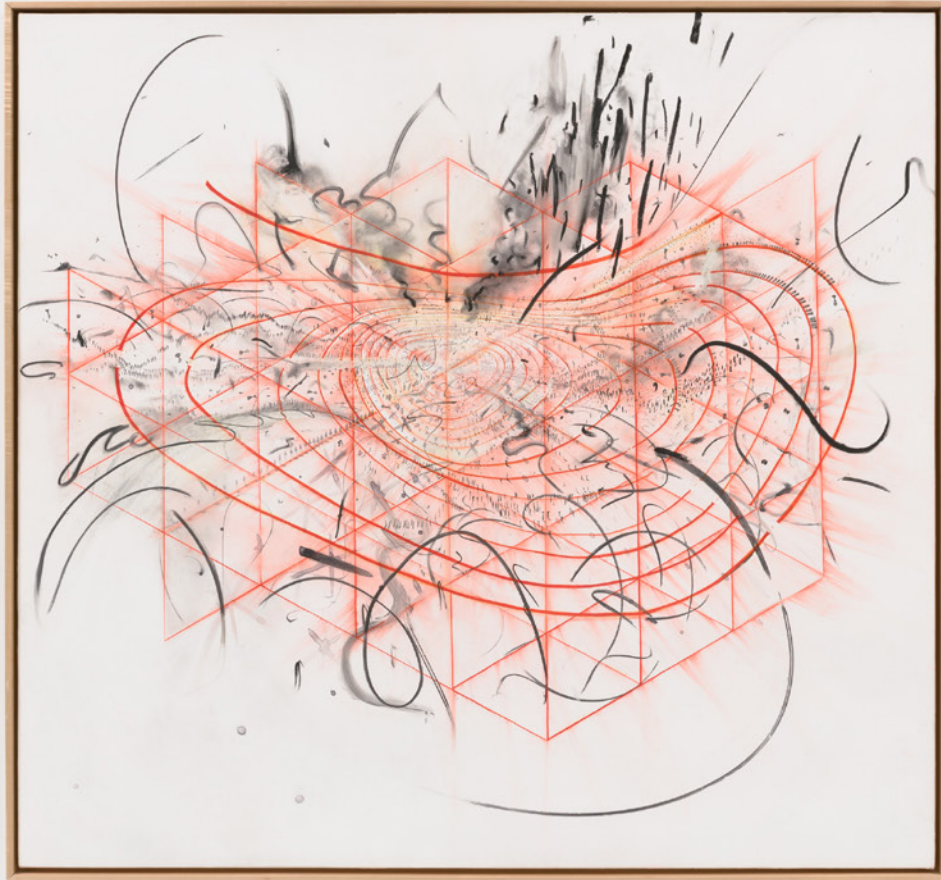


Isorithm 22-6, 2022

acrylic, ink, oil and dry pigment on canvas
56 × 60 in. / 142.2 × 152.4 cm

Provenance:

The Artist
Kent Fine Art LLC



Isorithm 22-7 (Bucha), 2022

acrylic, ink, oil and dry pigment on canvas
56 × 60 in. / 142.2 × 152.4 cm

Provenance:

The Artist

Exhibited:

Yulia Pinkusevich: Very Yellow-White Flash (2022). Round Weather Gallery, Oakland, California. 3 June – 23 July 2022.

This piece diagrams the violence and resistance of Ukraine during the Russian Invasion in March 2022 around the city of Bucha. Most of this City was destroyed and its still under Russian occupation.

-Yulia Pinkusevich



Isorithm 22-8 (Izum), 2022

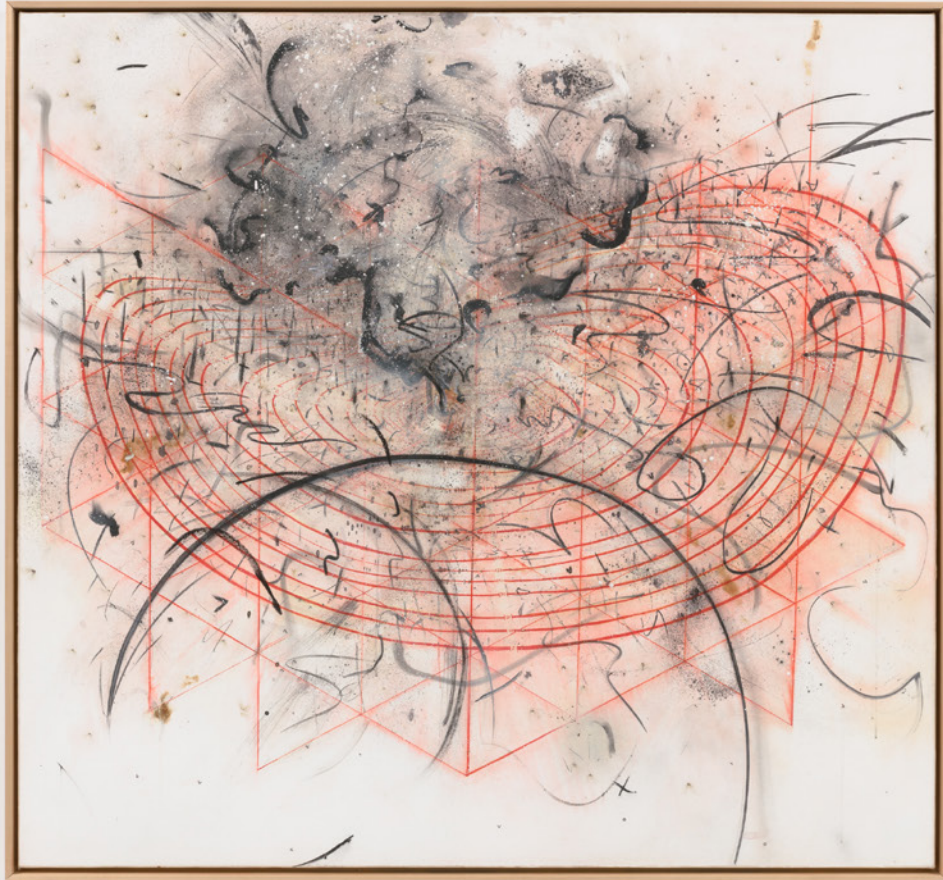
acrylic, ink, oil and dry pigment on canvas
56 × 60 in. / 142.2 × 152.4 cm

Provenance:

The Artist

Exhibited:

Yulia Pinkusevich: Very Yellow-White Flash (2022). Round Weather Gallery, Oakland, California. 3 June – 23 July 2022.



Isorithm 22-9 (Kharkiv), 2022

acrylic, ink, oil and dry pigment on canvas
56 × 60 in. / 142.2 × 152.4 cm

Provenance:

The Artist



Casualty Isorithm, 2018

charcoal, ink, graphite, and beeswax on paper
57 × 60 in. / 144.8 × 152.4 cm

Held in the collection of:

de Young Museum, San Francisco, California

**UNITED STATES
CIVIL DEFENSE**

**CIVIL DEFENSE
URBAN ANALYSIS**



TM-8-1

FEDERAL CIVIL DEFENSE ADMINISTRATION

P.D.
FED. CIV. DEF. ADMIN.
TM-8-1